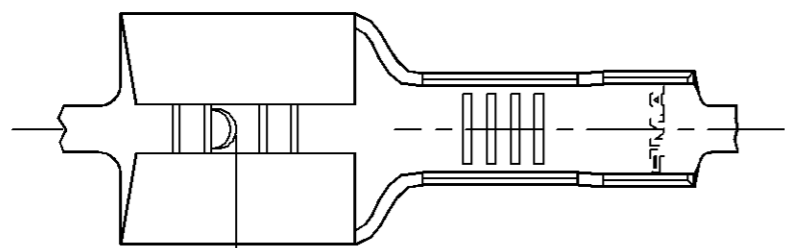


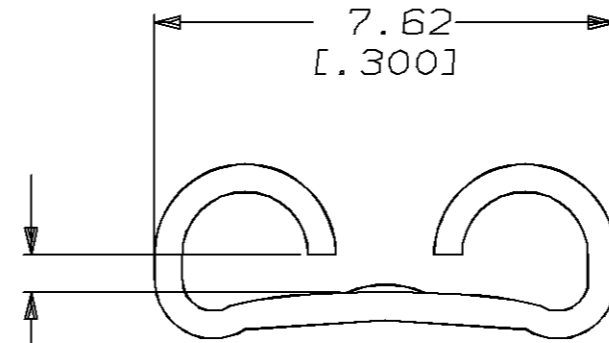
THIS DRAWING IS UNPUBLISHED. RELEASED FOR PUBLICATION, 19 .
 © COPYRIGHT 19 BY AMP INCORPORATED. ALL INTERNATIONAL RIGHTS RESERVED.

LOC	DIST	P	F	REVISIONS				
AF	50			ZONE	LTR	DESCRIPTION	DATE	APPD
					C	REV PER 0251-94	6/3/94	JR/PD

1 CONTINUOUS STRIP ON REELS.



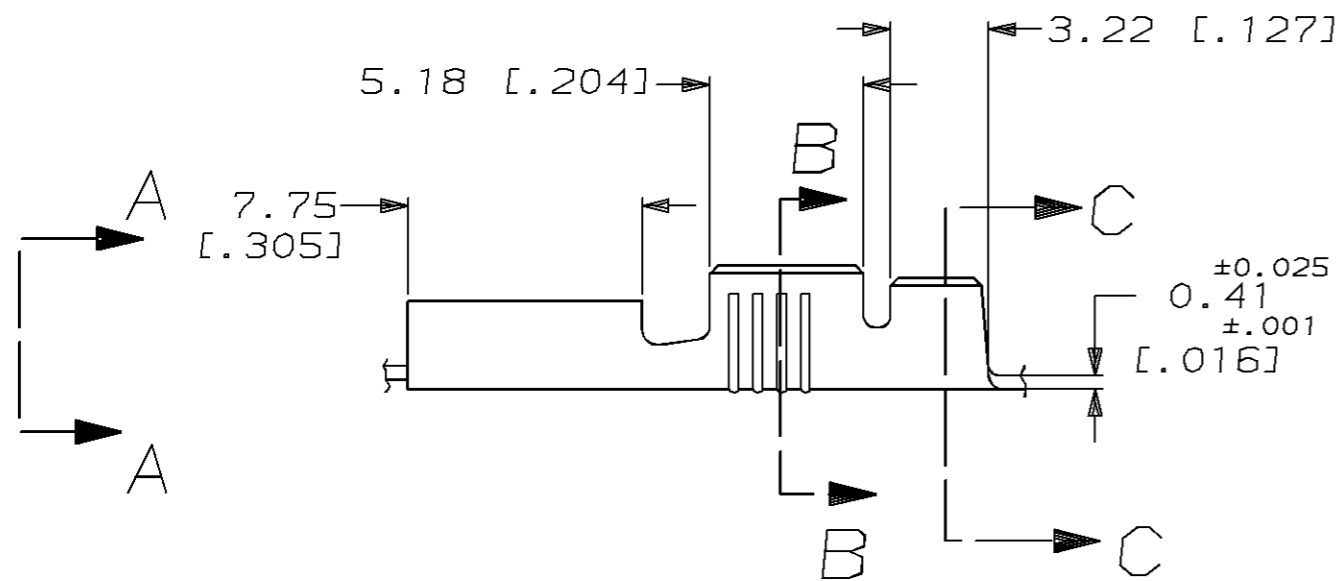
3.81
[.150]



7.62
[.300]

FITS 6.35 [.250] SERIES FASTON TABS

VIEW A-A
SCALE 8:1

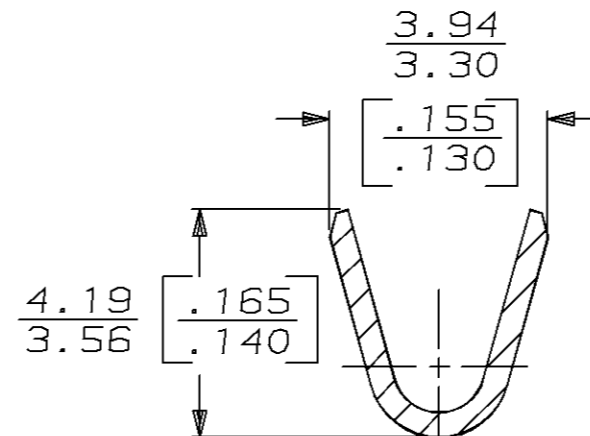


7.75
[.305]

5.18 [.204]

3.22 [.127]

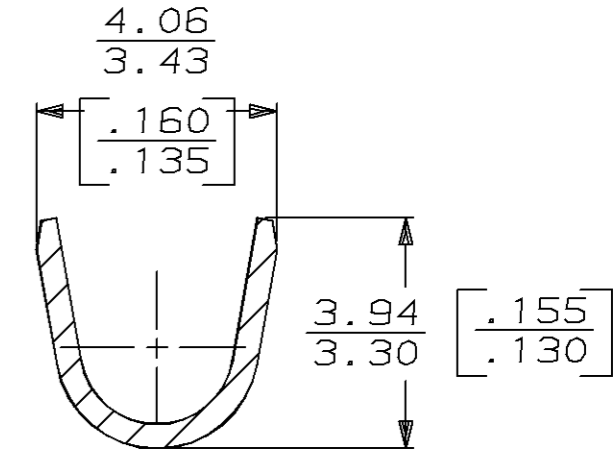
±0.025
0.41
±.001
[.016]



4.19
3.56

3.94
3.30
.155
.130

SECTION B-B
SCALE 8:1



4.06
3.43

.160
.135

3.94
3.30
.155
.130

SECTION C-C
SCALE 8:1

1.52-2.79 DIA [.060-.110] DIA	0.8-2.0mm ² [18-14] AWG	0.81 [.032]	63688-1
INSULATION RANGE	WIRE SIZE	MATING TAB THK ±0.025 [.001]	PART NO
DO NOT SCALE PRINT. UNLESS SPECIFIED DIMENSIONS IN mm [INCHES] TOLERANCES ON: 2 PLC DEC ± 0.25 [.010] 3 PLC DEC ± - ANGLES ± -	DR 4/26/93 JR RUTH CHK 4/26/93 MS FEHER APPD 4/26/93 P DESANTIS APPD 4/26/93 D REINER PRODUCT SPEC -	AMP AMP Incorporated Harrisburg, PA 17105-3608 NAME RECEPTACLE, FASTON, 6.35 [.250] SERIES	
MATERIAL TEMPER 2 STEEL	APPLICATION SPEC 114-2036 WEIGHT -	SIZE B	CAGE CODE 00779 DRAWING NO 63688
FINISH NICKEL 0.00381 [.000150] MIN		SCALE 4:1	SHEET 1 OF 1